

# Landscape Requirements

## Site Area Calculation

60,555 SF x 25% = 15,139 sf  
 50% trees = 7,570 sf

## POINTS SUPPLIED

TOTAL POINTS PROVIDED = 15,200 sf

Existing Trees = 0 sf  
 Canopy Trees (60 x 200) = 11,200 sf  
 Non Canopy Trees (40 x 100) = 4,000 sf  
 2-14 gallon shrubs (0 x 10) = 0 sf

Contractor to seed all disturbed area left unpaved and guarantee coverage of vegetation until grass is established.

Plant health is the responsibility of the contractor in the first 90 days after installation and must be replaced within 90 days of notification of deficiency.

Limits of irrigation include the Hydro mulched designated areas.


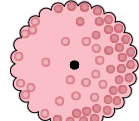

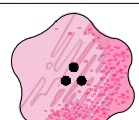
Irrigation Plans produced by successful bidder are required to be submitted to the City prior to installation. As-built plans are required to be supplied to the owner within 30 days of completion.

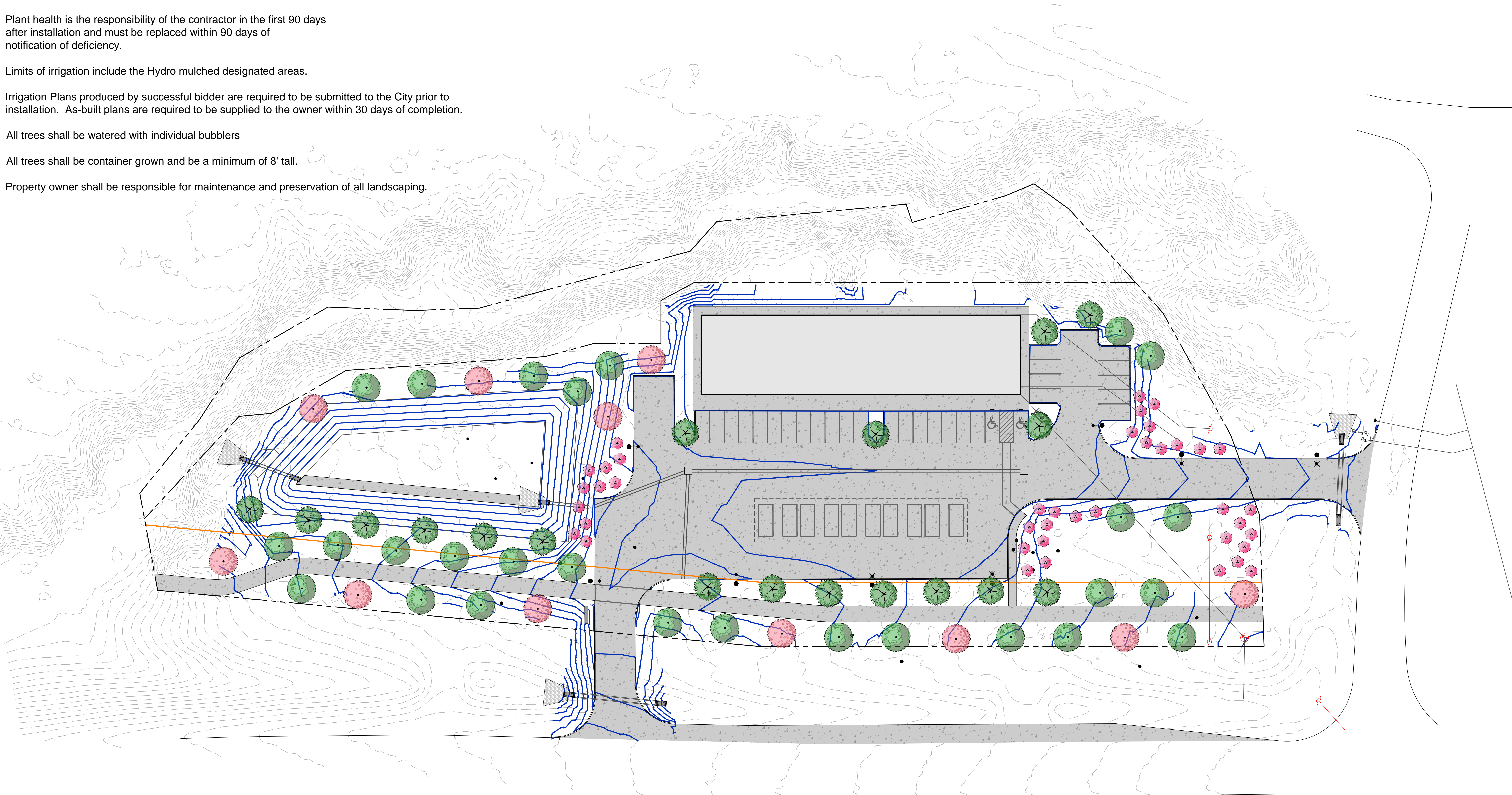
All trees shall be watered with individual bubblers

All trees shall be container grown and be a minimum of 8' tall.

Property owner shall be responsible for maintenance and preservation of all landscaping.

## PLANT SCHEDULE

SYMBOL	QTY	COMMON / BOTANICAL NAME	CONT	CAL	TRUNK
<b>CANOPY TREES</b>					
	18	Burr Oak / <i>Quercus macrocarpa</i> 18 x 200 SF = 3600 SF	As Needed	1.5"/Gal	
	11	Chinese Pistache / <i>Pistacia chinensis</i> 11 x 200 SF = 2200 SF	As Needed	1.5"/Gal	
	27	Live Oak / <i>Quercus virginiana</i> 27 x 200 SF = 5400 SF	As Needed	1.5"/Gal	
<b>NON CANOPY TREES</b>					
	40	Grape Myrtle / <i>Lagerstroemia</i> x "Tuscarora" 40 x 100 SF = 4000 SF	As Needed	1.5"/Gal	3 canes min.

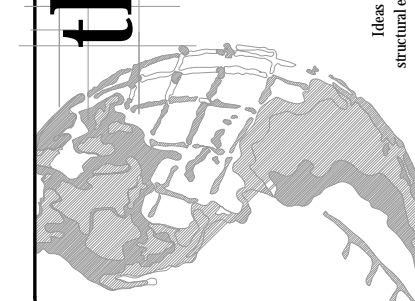


Submittals	BY



3949 WEST VILLA MARIA

the land design group inc.  
 551 william d. fitch pkwy #120 college station, texas 77845 . 979.846.2775



VILLA MARIA RETAIL

DRAWN CT  
 CHECKED AK  
 DATE 12-5-24  
 SCALE 1" = 30'-0"  
 JOB NO. LDG 24.154.11  
 SHEET

LS 1 OF

LANDSCAPE PLAN  
 SCALE: 1" = 30'-0"  
 VERIFY ALL DIMENSIONS

